

CCS QS Closed Transfer System Schematic

PUMP SYSTEM ASSEMBLY



CONTAINER BASE ASSEMBLY



MEASURING DEVICE



CCS8605 QS Set Up Instructions

Set-Up

Part 1

Assemble air hose onto the pump



Remove pump and air hose from the box.



Thread air hose onto pump



Tighten air hose with wrench.

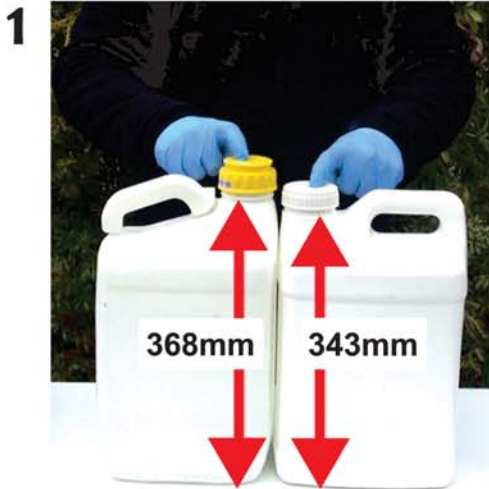


Make sure the air hose droops downward.

Set-Up

Part 2a

Select the correct tube

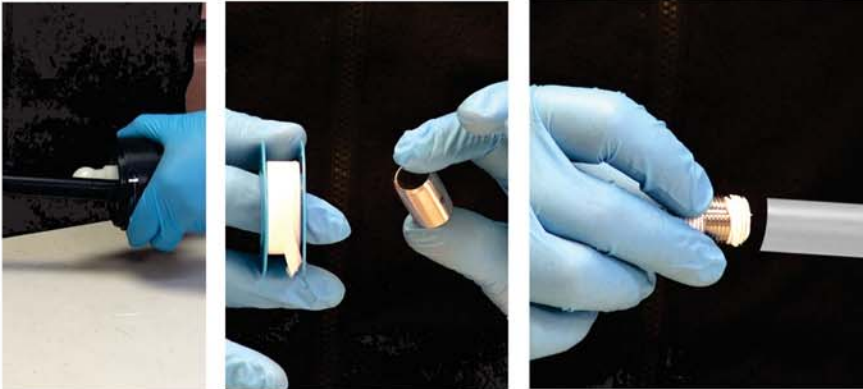


Notice the height of your container. Measures shown start at the floor and end at the ridge below the cap.



The black tube is designed for taller containers while the clear tube may be better for short ones. Each tube has a flexible hose at the top to accommodate different size containers. If desired, switch out tubes.

3



TO SWITCH OUT TUBES: Unscrew the black tube. Put in a safe place. Wrap steel thread with several PTFE wraps. Screw white tube completely onto PTFE wrapped steel thread.

4



Remove the cap. Use the pointed end of the tube to pierce the foil. Push adapter firmly down to engage container threads. Turn fitting and tube assembly fully onto the container.

CCS8605 QS Set Up Instructions

Set-Up Part 3 Set Up Pump



After you assemble the adapter onto the container, place your chemical container in a holder to prevent tipping when you add pressure.



Connect the pump to the adapter.



To maximize extraction, keep container at 20 degree angle.
Approximately 25 ml should be left at the bottom when complete.

CCS8605 QS Set Up Instructions

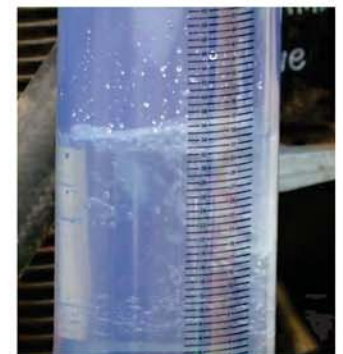
Measure and Rinse

Connect Pump to measuring device.



Connect chemical hose to pump and measuring device

Use pump to dispense and measure concentrate.



Add pressure to container with piston

Open valve on hose until desired level is reached.

Release chemical into application equipment and rinse the measuring device.

Backflow chemical in hose back to source container.



Open valve to release chemical.



Rinse measuring device between uses.



To drain chemical from hose, open release on pump, then valve on hose.

CCS8605 QS Set Up Instructions

Dispense - No Measure

Deliver liquid to application equipment with no measuring if desired.



Connect chemical hose directly to the tank to dispense without the measuring device.



To drain chemical from hose, open release on pump, then valve on hose.

Triple Rinse the Container

When container is empty, connect water hose to pump and triple rinse.



When chemical container is empty, connect chemical hose to mix tank and open valve, connect water hose to air/rinse input on pump. Add 2 liters of water, shake vigorously for 15 seconds. Empty out the water through the hose into the measuring cylinder using either the pump or pneumatic device if used; repeat 3 more times.

CCS8605 QS: Flushing Pump between Chemicals

System Set-Up

Leave chemical hose connected to pump and the rest of the system



Drain residual chemical back into container following other instructions. Leave chemical hose connected to the pump.



Also leave chemical hose connected to either mix tank or measuring device. Be very sure to leave the valve wide open to prevent an accident.

Rinse pump

Setup drain system



1. Remove pump from chemical container.
2. Connect Rinse System to bottom of pump.
3. Add backflow preventor if required.
4. Open valve and let water run for 5 seconds.
5. Close valve on hose and remove from pump.

1. Connect hose drain to bottom of pump.
2. Make sure the valve is fully closed.

Drain rinsate by opening valve on hose drain.



Drain rinsate into appropriate container



OR Drain rinsate into mix tank or measuring device