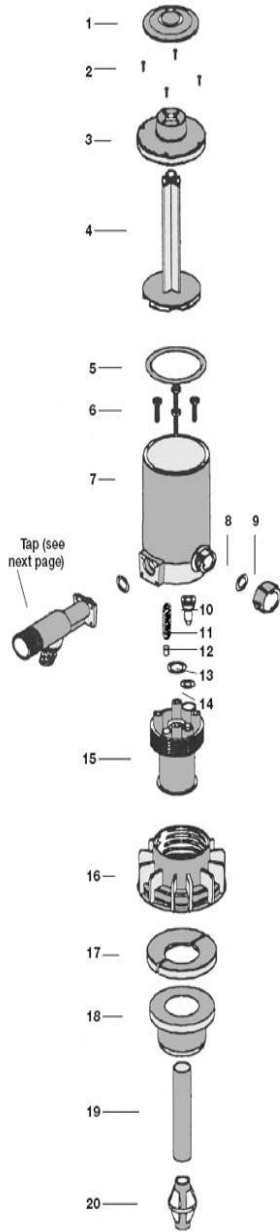


Pump components

- 1 Piston screw cap
- 2 Body cap screws (4)
- 3 Body cap
- 4 Main body piston
- 5 Piston o-ring
- 6 Manifold screws (4)
- 7 Pump body
- 8 Pressure release valve o-ring
- 9 Pressure release knob
- 10 Non-return valve (check valve)
- 11 Safety release spring
- 12 Safety release plug
- 13 Sub-assembly o-ring
- 14 Manifold o-ring
- 15 Pump manifold
- 16 Drum seal expander
- 17 Drum seal retaining ring
- 18 Drum seals (3 sizes)
 Small.....1.81" (44.4mm)
 Medium2.00" (52.5mm)
 Large.....2.25" (56.5mm)
- 19 Siphon tube (4)
- 20 Siphon tube connector



Tap components

